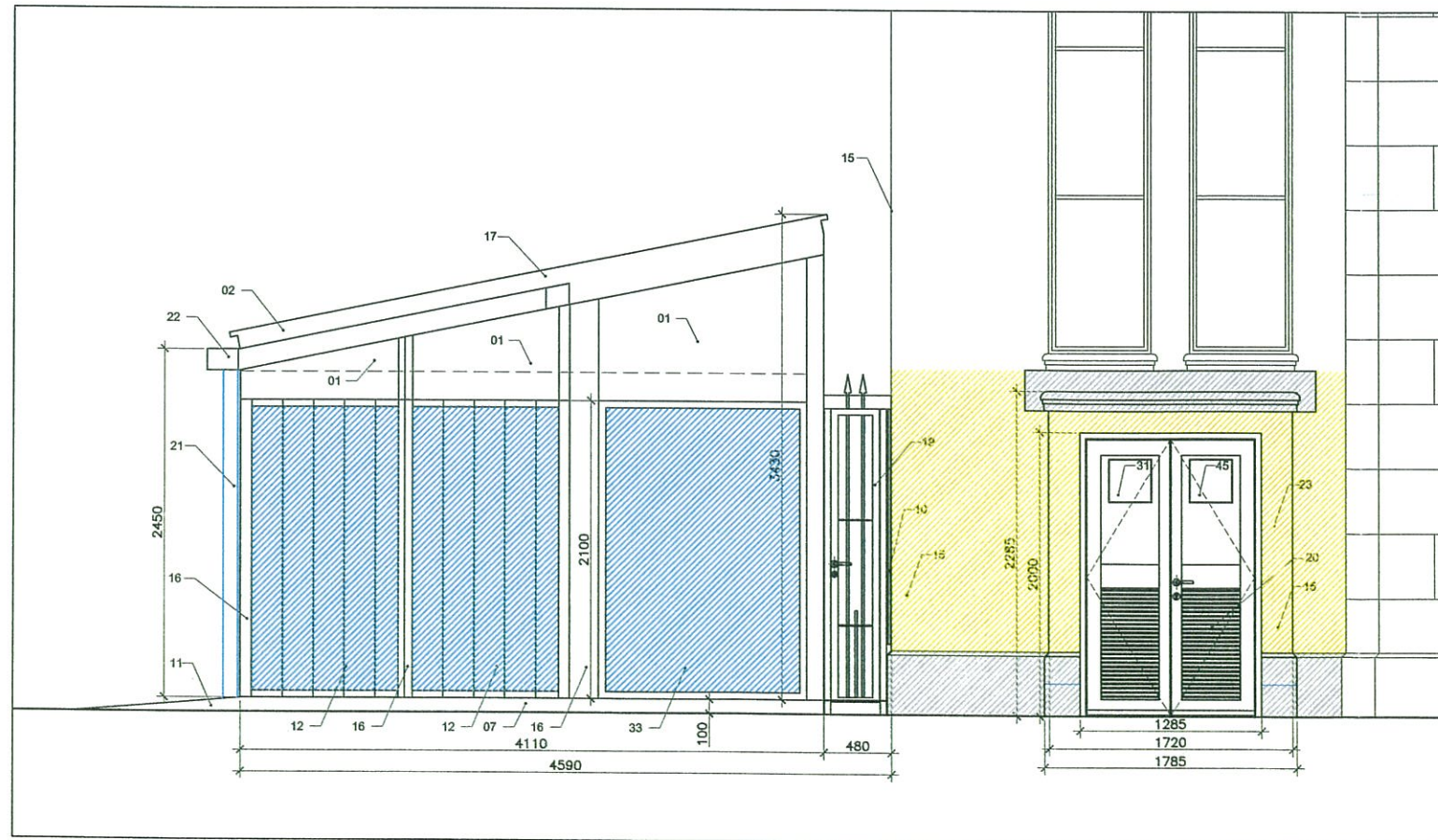
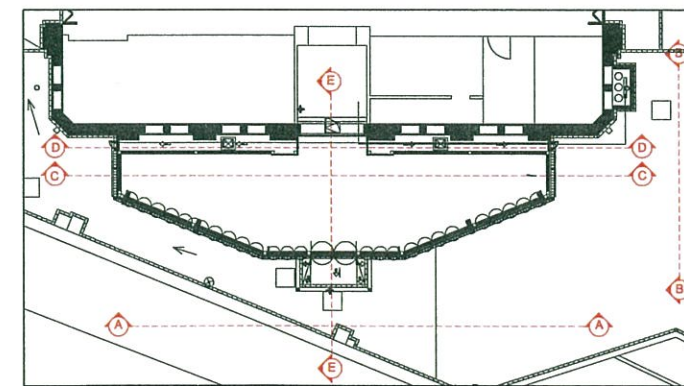


PROPOSED WEST ELEVATION (SECTION A-A) - SCALE 1:25



PROPOSED SOUTH ELEVATION (SECTION B-B) - SCALE 1:25



GENERAL NOTES:

- A. DEMOLITION AND CARLING AWAY OF EXISTING STRUCTURE AND FLOOR COVERINGS, PROVIDE A CLEAN AND LEVEL SURFACE TO WORK FROM.
- B. INSPECTION OF UNDERGROUND DRAINS / MANHOLES NOT SURVEYED UNDER THE PREVIOUS CONTRACT (CCTV MAY BE NECESSARY)
- C. WORKS (AS NECESSARY) TO UNDERGROUND DRAINAGE RUNS FROM THE MAIN MARKET HALL ACROSS & UNDER THE FRITTERS ENCLOSURE
- D. POSSIBLE RELOCATION OF MANHOLES AND / OR LAND DRAINS
- E. LAND SURFACE WATER DRAINAGE, COLLECTION AND DISPOSAL (EXTERNAL AREAS TO THE ENCLOSURE)
- F. FULL M+E DETAIL DESIGN & SPECS FOR THE NEW FRITTERS ENCLOSURE, INCLUDING RW DISPOSAL, ELEC. SUPPLY (POWER / LIGHTING / FIRE + SMOKE ALARM)
- G. PROBABLY TO ALSO INCLUDE: THE UPGRADING / MAKING SAFE OF ELECTRICAL INSTALLATION WITHIN THE EXIST. FRITTERS SHOP (GEORGE W. HAS PREVIOUSLY INSPECTED THIS ELEMENT AS WELL AS GIBBY'S OWN SUB-CONTRACTOR - REPORT AVAILABLE)
- H. STRUCTURAL ENGINEER TO CONFIRM DETAILS OF CONNECTION BETWEEN ENCLOSURE FRAME AND RC FOOTING.

NOTES:

DO NOT SCALE OFF THIS DRAWING. CHECK DIMENSIONS ON SITE PRIOR TO COMMENCEMENT. THIS DRAWING IS THE COPYRIGHT OF WSRM LTD. AND MUST NOT BE COPIED OR REPRODUCED, IN PART OR IN WHOLE, WITHOUT PERMISSION OF WSRM LTD. TO BE READ IN CONJUNCTION WITH OTHER RELEVANT CONSULTANTS INFORMATION.

BUILDING NOTES:

NBS	REF	DESCRIPTION
XXXXXX	01	ALUMINIUM INSERT PANELS TO SUPPLIER / MANUFACTURERS DESIGN
XXXXXX	02	ALUMINIUM GABLE END ROOF SECTION, BOX GUTTER AND DOWNPIPES TO SUPPLIER / MANUFACTURERS DESIGN.
XXXXXX	03	EXISTING MANHOLE TO M+E SPECIFICATION. (M+E ENGINEER TO INVESTIGATE ALL MANHOLES)
XXXXXX	04	NEW ROLLER SHUTTER OR NEW DOOR.
XXXXXX	05	WATERPROOF AND SEAL ALL WINDOWS
XXXXXX	06	INTERNAL FLOOR NON-SLIP (R13) CERAMIC TILES TO FALLS.
Q10110	07	MARSHALLS KL HALF BATTERED STANDARD BLOCK (100X17X200H) REF: NYPV7000000 COLOUR CHARCOAL
XXXXXX	08	GENERAL FOOTPATH MARSHALLS SAXON TEXTURED CONCRETE PAVING SLABS, 450X450X50MM, COLOUR NATURAL. REF: FL5030500
Q25215	09	MARSHALLS KEYBLOCK TEXTURED CONCRETE BLOCK PAVING, 200X100X50MM, COLOUR CHARCOAL. REF: PWB8800 (CONTRACTOR/SUPPLIER & STRUCT. ENGINEER TO CONFIRM SUITABILITY FOR VEHICULAR LOADING + EXACT BEDDING REQUIREMENTS)
XXXXXX	10	WATERPROOF CONNECTION BETWEEN EXIST BLDG AND NEW EXTERNAL STRUCTURE.
XXXXXX	11	NEW DDA COMPLIANT RAMP ACCESS TO NEW INTERNAL RAISED FLOOR
XXXXXX	12	FOLDING TYPE GLAZING ENCLOSURE (GLASS CURTAIN), FRAME + PANELS IN GRAPHITE GREY (RAL 7024) TO SUPPLIER/MANUFACTURERS DESIGN. GLASS TO BE TOUGHENED / LAMINATED (MIN. 10mm SOLAR REFLECTIVE WITH BRONZE TINTED FINISH WITH MANIFESTATION AT APPROPRIATE LEVEL.
XXXXXX	13	LINE SHOWING HIGH POINT (SPOT LEVEL TBC BY CONTRACTOR)
XXXXXX	14	ENGINEERING BRICK SOLDER COURSE FORMING PLINTH - COLOUR: CHARCOAL GREY
XXXXXX	15	TREAT, RENDER & PAINT EXISTING WALL ONCE OLD STRUCTURE IS REMOVED - TO MATCH REST OF THE BUILDING, MARMOLINA SPECS BY BRIGHTSIDE & Co LTD.
XXXXXX	16	PPC ALUMINIUM PROFILE, FINISH COLOUR: GRAPHITE GREY (RAL 7024) (SIZES & FIXING TBC BY STRUCT. ENG. OR SPECIALIST SUPPLIER / MANUFACTURER FOR CA APPROVAL)
XXXXXX	17	ALUMINIUM ROOF PANELS OVER BOX SECTION RAFTERS TO SUPPLIER / MANUFACTURERS DESIGN.
XXXXXX	19	NEW FENCE: MARINE GRADE GALVANIZED STEEL TO DOOR WITH HANDLE AND LOCK. COLOUR GRAPHITE GREY (RAL 7024), BAR CENTRES NOT TO EXCEED 100MM.
XXXXXX	20	NEW DOUBLE DOOR AND FRAME TO BE FORMED FROM HARDWOOD TIMBER MATCHBOARDING WITH VENTILATION LOUVRES, WITH HANDLE, LOCK AND INSECT MESH) TO SPECIALIST DESIGN. TIMBER TO BE TREATED, PRIMED AND RECEIVE EXTERNAL TIMBER PAINT COLOUR GRAPHITE GREY TO MATCH NEW FRONT DOORS. SPECIALIST TO PROVIDE DOOR DETAILS AND IRONMONGERY SAMPLE FOR APPROVAL PRIOR TO MANUFACTURE. LOCK TO BE AS STANDARD GAS COMPANY REQUIREMENT.
R10XXXX	21	NEW RWP: RECTANGULAR DOWNPIPE M+E ENG TO CHECK FOR CAPACITY, COLOUR TBC
R10XXXX	22	PPC ALUMINIUM RECTILINEAR GUTTER M+E ENG TO CHECK FOR CAPACITY, COLOUR TBC
XXXXXX	23	ENCLOSURE FOR GAS CYLINDER M+E TO CONFIRM SIZE (DIM'S)
XXXXXX	24	RUN OF GAS SUPPLY TO BE 25MM HDPE PIPE BURIED UNDERGROUND. 400mm COVER TO BE PROVIDED WITH GAS WARNING TAPE AT 200mm GAS SUPPLY PIPE + ROUTE TO M+E SPECS.
XXXXXX	25	PPC ALUMINIUM COMPOSITE PANEL CONNECTING ROOF AND SIDE PANELS WITH MIN 150mm UPSTAND FLASHING SUITABLY DRESSED, CHASED AND WATERPROOFED INTO EXIST WALL.
XXXXXX	26	RC SLAB TO STRUCTURAL ENGINEER SPECIFICATION
XXXXXX	27	FLOOR LIGHT TO BE REMOVED TO M+E SPECS.
XXXXXX	31	WARNING SIGN TO M+E SPECIFICATION.
XXXXXX	33	FIXED GLAZING - SCREEN, SIZE, FIXINGS AND NUMBER OF PANELS TO SUPPLIER / MANUFACTURERS DESIGN
XXXXXX	35	LINE OF 150MM WIDE ACO CHANNEL DRAIN TO PERIMETER OF RAMPED ENTRANCE AND DRAINAGE POINTS TO CONNECT TO EXISTING MH TO M+E SPECIFICATION
XXXXXX	36	LINE OF 150MM WIDE ACO CHANNEL DRAIN TO PERIMETER OF RAMPED ENTRANCE AND DRAINAGE POINTS TO CONNECT TO EXISTING MH TO M+E SPECIFICATION

BUILDING NOTES:

NBS	REF	DESCRIPTION
XXXXXX	37	600X600X150 RECESSED IRON MANHOLE COVER & FRAME, SUITABLE FOR UP TO 80mm PAVING BLOCKS/SLABS, TO BS EN 124 CLASS D400 (+ LIFTING KEYS), TO ENG DETAIL DESIGN.
XXXXXX	40	BACKDROP AND REBENCH TO EXISTING MANHOLE. DETAILS TO BE AGREED UPON COMPLETION OF CLEANING AND DYE TEST TO M+E SPECIFICATION
XXXXXX	41	LINE OF 75MM Ø PROPOSED STACK WITHIN CORNER FOR CONNECTION OF WASTE SERVICES TO DROP BELOW GROUND FOR CONNECTION TO EXISTING SEWER SYSTEM TO M+E SPECIFICATION
XXXXXX	44	GAS CYLINDER 300mm WIDE BY 150 mm IN HEIGHT
XXXXXX	45	LEAN-TO ROOF, ALLOW FOR EASILY IDENTIFIABLE SIGN LOCATION TBC ON SITE, TO READ: 'IMPORTANT: THIS ROOF IS NOT TO BE USED UNDER ANY CIRCUMSTANCES AS A SUPPORT FOR MAINTENANCE PERSONNEL FOR CLEANING OF WINDOWS OR GENERAL MAINTENANCE PURPOSES'

rev	date	amendments
A	25.05.12	WC REMOVE AND WC NOTES

**WSRM architects**  
 Suite 1.2.20  
 Euro Towers  
 PO BOX 474  
 GIBRALTAR  
 Tel: (350) 20074547  
 Fax: (350) 20074583  
 Email: architects@wsrm.gi  
 Web: www.wsrmg.com

CLIENT  
**TECHNICAL SERVICES DEPARTMENT**  
 PROJECT  
**FRITTERS ENCLOSURE**  
 DRAWING TITLE  
**PROPOSED ELEVATIONS**

SCALE	JOB + DRG REF No.	REV
1:25@A1	G524[3-003]-GA-ELEVATIONS-00	A
DATE		
09.03.12		